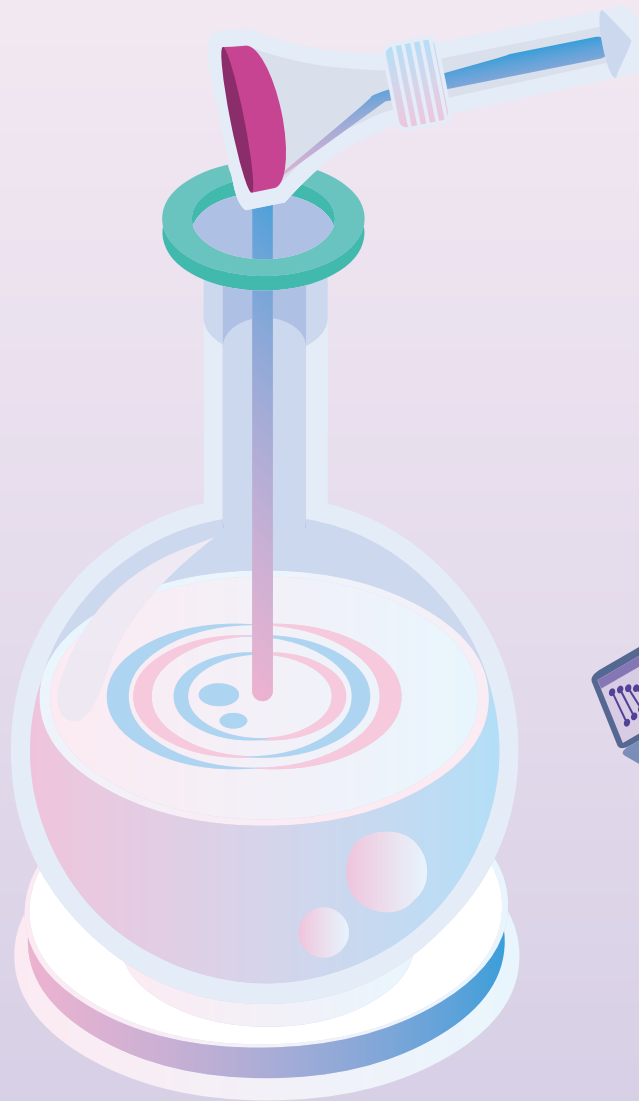


Saliva DNA Sample Collection Kit

Professional and reliable collection package

- ✓ Collection Kit
- ✓ Saliva collecting funnel
- ✓ 5 mL sample tube with 1 mL preservative solution
- ✓ Sample barcode



Preserve your genomic DNA stably at room temperature

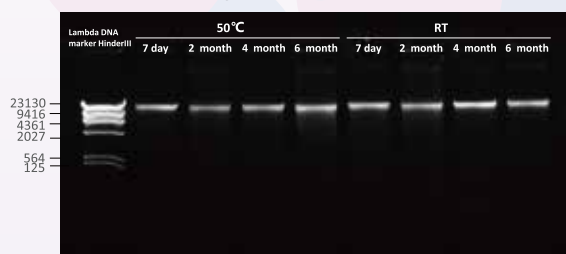
Help you to discover genome

Accurate data originated from professional and reliable technology

- Easy and noninvasive operation
- Professional and reliable preservative reagent
- Applicable for PCR, ARRAY, Sequencing

Performance

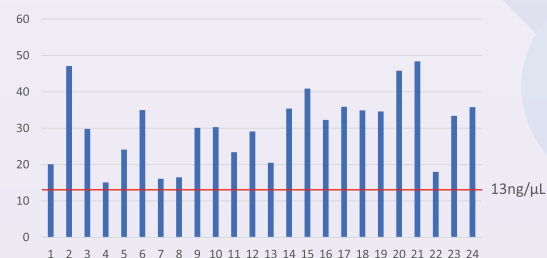
Integrity of extracted DNA



Yield of extracted DNA from 400 μ L sample

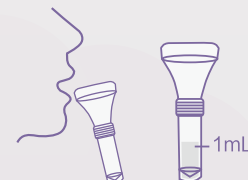


Concentration of extracted DNA



Collecting workflow

- 1 Rinse your mouth 30 minutes before collecting
- 2 Spit 1 mL saliva into the collector (exclude the foam)



- 3 Transfer the preservative solution into the tube, mix thoroughly
- 4 Screw the cap and stick the barcode



Information

Cat. No.	1000025954
Certification	RUO
Specification	1 prep / kit
Stabilizer volume per kit	1 mL
Automation	MGISTP-7000

MGI Tech Co., Ltd.

- 📍 **Address** Building 11, Beishan Industrial Zone, Yantian District, Shenzhen, China
- ☎ **Telephone** +86 4000-688-114
- 🌐 **Website** en.mgi-tech.com
- ✉ **Service** MGI-service@mgi-tech.com

Version: May 2023 | MGPD2021002-01



<https://www.linkedin.com/company/mgi-bgi>



https://twitter.com/MGI_BGI

