

# MGIEasy Total RNA Extraction Set

This kit uses the salt ions with high concentration lyse and release RNA from samples. The released RNA is then captured by magnetic beads and washed by specific wash buffer to remove proteins. It suitable for total RNA extraction from samples such as cells, animal tissues (fresh or frozen), blood, etc. Simultaneously the kit adapt to automated nucleic acid extraction equipment with different throughput such as MGISP-NE384 and MGISP-960.



## High Purity of RNA Extraction

Especially apply to the extraction of tissues and cells



## Wide Range of Application Types

Suitable for different sample types such as tissues, cells, blood, bacteria, etc.



## Easy Operation

Only needs 40 minutes to extract total RNA from samples



## Product Information

Principle	Magnetic bead method
Period of validity	12 mouths
Specifications	96 RXN, 384 RXN
Storage conditions	MGIEasy Total RNA Extraction kit: room temperature
	DNase I: -25 °C~-15°C
Sample type	Suitable for cultivating eukaryotic cells, tissues of humans or animals, blood, prokaryotic cells such as bacterial G+ and bacterial G -.
Application	RNA-seq、RT-qPCR ect.
Automatic equipment	MGISP-NE384、MGISP-960、MGISP-NEX、MGISP-NE32

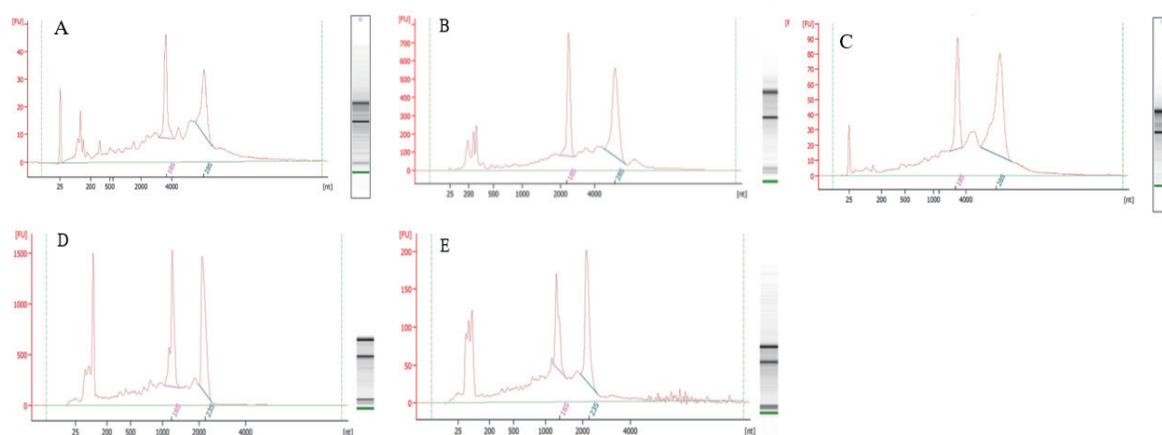
## Performance

### ● Excellent Extraction Performance

Use MGIEasy total RNA extraction set to extract RNA from 5 mg rat liver,  $5 \times 10^5$  HCT116 (human colon cancer cells), 200  $\mu$ L human whole blood,  $1 \times 10^7$  SAU (Staphylococcus aureus) and  $1 \times 10^9$  E.coli (Escherichia coli). The results showed that the MGIEasy total RNA extraction set extracted total RNA from different samples with high integrity, high purity, high yield, and superior extraction performance.

Sample type	Qubit ( $\mu$ g)	A260/A280	A260/A230	RIN
Rat liver	26.48	2.04	1.85	7.1
HCT116	13.96	2.05	2.06	7.8
Human whole blood	5.54	1.88	1.68	7.6
SAU	35.83	2.16	2.4	8.4
E.coil	12.38	2.07	1.95	7.5

Table 1: Extraction performance of MGIEasy total RNA extraction set for extracting total RNA from different samples



### ● Wide Range of Application Types

Use MGIEasy total RNA extraction set and Brand O, Brand Q, Brand M extraction kit to extract total RNA from different samples: rat liver, rat lung, E.coli, SAU, HCT116 and HWB (human whole blood). The qPCR detection results show that MGIEasy total RNA extraction kit can extract high-quality RNA from different sample types, with a wide range of applications and better performance than other brands.

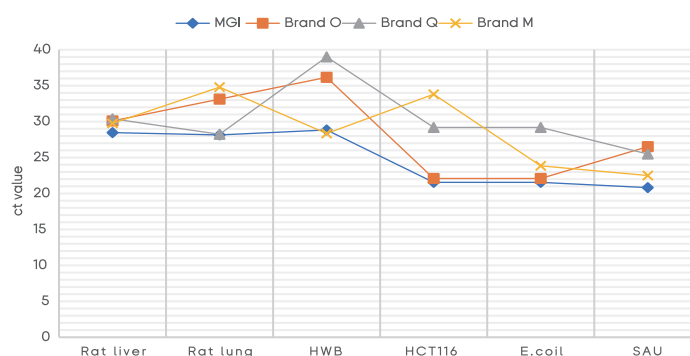


Figure 2: Comparison of qPCR results of total RNA extracted from different samples

## Ordering Information

Product Name	Item NO.	Component Name	Specifications
MGIEasy Total RNA Extraction set (MRT96)	940-000880-00	MGIEasy Total RNA Extraction kit DNase I	96 RXN/ kit
MGIEasy Total RNA Extraction set (MRT384)	940-000875-00	MGIEasy Total RNA Extraction kit DNase I	384 RXN/ kit

