

# MGIEasy Plant gDNA Extraction Set

This kit uses the salt ions with high concentration lyse and release DNA from plants. The released DNA is then captured by magnetic beads and washed by a specific wash buffer to remove impurities. Then genomic DNA with high yield, good integrity, and high purity is obtained. It apply to leaves and seeds of plants including that rich in polysaccharides and polyphenols. Simultaneously it adapt to automation equipment MGISP-NE384 and MGISP-960. It apply to PCR, qPCR, sequencing and other applications.



## Superior performance

The kit can extract high yield, high purity, and good integrity DNA. It also compatible with extraction of plant dry powder.



## Easy to operate

It only takes 30 minutes for genomic DNA extraction from plant.



## Automated DNA extraction

The kit can adapt to automated nucleic acid extraction equipment MGISP-NE384 and MGISP-960.



## Product Information

Product Name	MGIEasy Plant gDNA Extraction Set
Principle	Magnetic bead method
Period of validity	18 months
Specifications	96 RXN, 384 RXN
Storage conditions	MGIEasy Plant gDNA Extraction kit: room temperature RNase A: 2~8 °C
Sample type	leaves and seeds of plants including that rich in polysaccharides and polyphenols
Application	PCR, qPCR, sequencing etc.
Automatic equipment	MGISP-NE384、MGISP-960
Qualification	RUO (Research Use Only)

## Performance

- Using the MGIEasy plant genome DNA extraction set to extract different plant sample: rice, wheat, pine needles, rape, tomato leaves, and cotton, corn, and soybean seeds genomic DNA. And the results showed a high DNA yield: 6–30 $\mu$ g DNA can be extracted from 100mg samples, high purity: A260/A280 between 1.7 to 1.9.

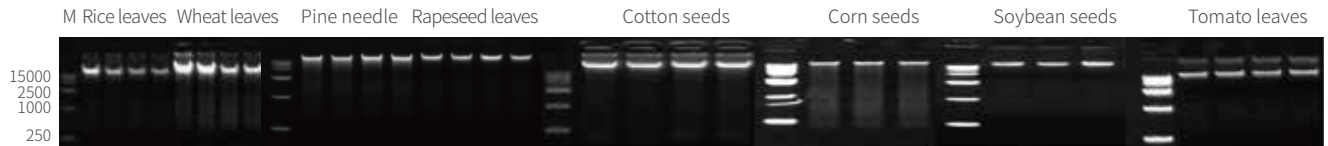


Figure 1 PAGE results of genomic DNA from different plant samples

Table 1 yield and purity of genomic DNA in different plant samples

Sample type	yield ( $\mu$ g/100mg)	A260/A280
Rice leaves	11.1	1.89
Wheat leaves	30.02	1.85
Pine needle	8.62	1.79
Rapeseed leaves	6.55	1.84
Cotton seeds	45.15	1.84
Corn seeds	5.99	1.80
Soybean seeds	16.89	1.66
Tomato leaves	11.73	1.87

- Using MGIEasy plant genome DNA extraction set, brand A and brand B plant DNA extraction kits, extract genomic DNA from different types of plants. After qPCR detection of internal reference genes in tomato leaves and cotton seeds samples. The results showed that the CT value of the extracted products using MGIEasy plant genome DNA kit was low and the performance was superior.

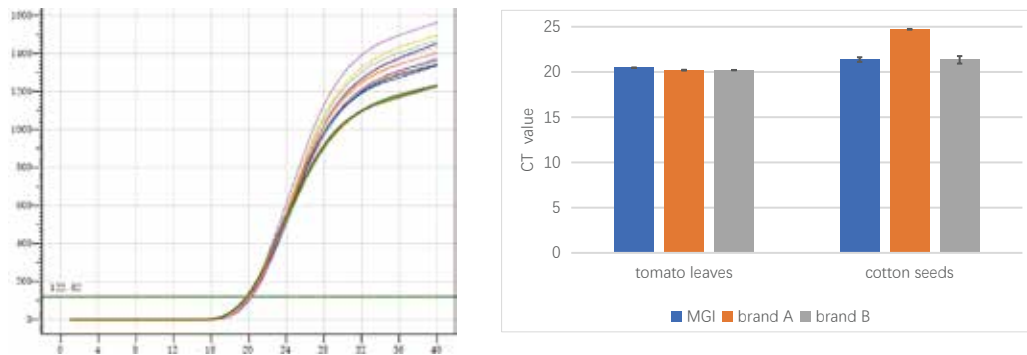


Figure 2 Comparison of qPCR results after DNA extraction from tomato leaves and cotton seeds

## Order Information

Cat. No.	Name	Specification
940-001323-00	MGIEasy Plant gDNA Extraction Set (PDT-96)	96 RXN
940-001324-00	MGIEasy Plant gDNA Extraction Set (PDT-384)	384 RXN

MGIEasy Tech Co., Ltd.

Building 11, Beishan Industrial Zone, Yantian District, Shenzhen, China

Version: December 2024

en.mgi-tech.com

MGI-service@mgi-tech.com

+86-4000-688-114

