



Part No.: H-020-000871-00

# MGIEasy

## Stool Collection Kit

Instructions for Use

Version: 2.0

Leading Life Science Innovation

Address: Building 24, Stage 3.1, BioLake Accelerator, No.388, 2nd Gaoxin Road,  
East Lake High-Tech Development Zone, 430075, Wuhan, P.R. China

E-mail: [MGI-service@mgi-tech.com](mailto:MGI-service@mgi-tech.com)

Website: [en.mgi-tech.com](http://en.mgi-tech.com)

Research Use  
Only

**Wuhan MGI Tech Co., Ltd.**

---

## About the instructions for use

This instructions for use is applicable to MGIEasy Stool Collection Kit. The version of the instructions for use is 2.0 and the kit version is 1.0.

This instructions for use and the information contained within are proprietary to Wuhan MGI Tech Co., Ltd. (hereinafter called MGI), and are intended solely for the contractual use of its customers in the use of the products described herein and for no other purpose. This instructions for use and its content shall not be reprinted, reproduced, modified, distributed, or disclosed to others, in whole or in part, without prior written consent from MGI.

MGI has taken measures to ensure the correctness of this instructions for use. However, MGI is not responsible for any missing parts of the instructions for use and reserves the right to revise the instructions for use and modify the kit to improve the reliability, performance or design.

Figures in this instructions for use are for illustrative purpose only. The content might be slightly different from the kit. For the most up-to-date details, refer to the kit purchased.

MGIEasy™ is the trademark of MGI, or its subsidiaries in China and/or other countries. Other names and trademarks mentioned in this instructions for use may be the property of their respective companies and subsidiaries.

©2023-2024 Wuhan MGI Tech Co., Ltd. All rights reserved.

---

## Revision history

Version	Date	Description
2.0	March 19, 2024	Added the production specification
1.0	December 19, 2023	Initial release

# Contents

---

<b>Chapter 1 Introduction</b>	<b>1</b>
1.1 Product name	1
1.2 Specification	1
1.3 Intended use	1
1.4 Working principle	1
1.5 Main components	1
1.6 Storage condition and validity period	2

---

<b>Chapter 2 Sample requirements</b>	<b>2</b>
2.1 Applicable sample	2
2.2 Sample storage	2
2.3 Sample safety	2

---

<b>Chapter 3 Operation</b>	<b>3</b>
----------------------------	----------

---

<b>Chapter 4 Warnings and precautions</b>	<b>5</b>
---	----------

---

<b>Appendix 1 Manufacturer information</b>	<b>5</b>
--	----------

---This page is intentionally left blank.---

---

# Chapter 1 Introduction

---

## 1.1 Product name

MGIEasy Stool Collection Kit

---

## 1.2 Specification

Name	Model	Specification	Cat. No.
MGIEasy Stool Collection Kit	GSC02-I-15	1 Prep/Kit	940-001644-00
MGIEasy Stool Collection Kit	GSC02-I-30	1 Prep/Kit	940-001645-00

---

## 1.3 Intended use

This product is used to collect, transport, and store human stool samples. Stool samples can be stably stored at room temperature in this product. The nucleic acids in the stool can be used for human gDNA testing, microorganism metagenomic sequencing, and so on.

---

## 1.4 Working principle

With preservation solution, this product can inhibit bacteria growth in nonfreezing condition, reduce the activity of enzyme related to DNA degradation, and greatly improve DNA stability. Therefore, this product can stably transport and store the stool sample.

---

## 1.5 Main components

**Table 1 MGIEasy Stool Collection Kit (940-001644-00)**

Component	Main ingredient	Specification
Stool Collection Tube (Preservation Solution)	Preservation Solution	6 mL/tube×1
Disposable glove	/	1 Bag
Sampling paper	/	1 Bag
Specimen transport bag	/	1 EA

Component	Main ingredient	Specification
Information card	/	1 Piece

**Table 2 MGIEasy Stool Collection Kit (940-001645-00)**

Component	Main ingredient	Specification
Stool Collection Tube (Preservation Solution)	Preservation Solution	15 mL/tube*1
Disposable glove	/	1 Bag
Sampling paper	/	1 Bag
Specimen transport bag	/	1 EA
Information card	/	1 Piece

## 1.6 Storage condition and validity period

- This product can be stored at 2 °C to 30 °C for 18 months.
- This product can be transported at 2 °C to 40 °C.
- For the use-by date, refer to the label.

# Chapter 2 Sample requirements

## 2.1 Applicable sample

This product is applicable to fresh stool samples.

## 2.2 Sample storage

Freshly collected stool samples are stable to store in the collection tube for 7 to 15 days at -70 °C to 40 °C .

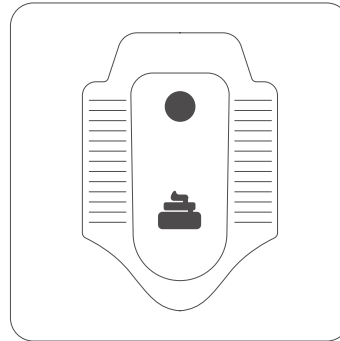
## 2.3 Sample safety

All samples should be considered potentially infectious and should be handled in accordance with relevant local laws and regulations.

## Chapter 3 Operation

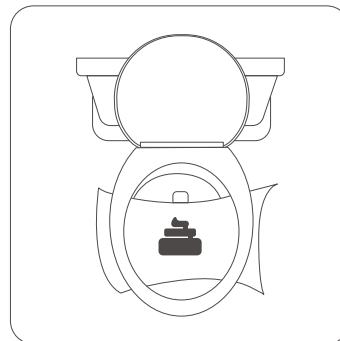
Perform the following steps:

1. Unpack MGIEasy Stool Collection Kit and take out stool collection tube, disposable gloves, sampling paper, and specimen transport bag.
2. Choose either of the following methods to collect the sample:
  - In squat toilet: Excrete stool in a clean toilet and collect it within 10 minutes. Ensure that the sample is not contaminated by the urine.



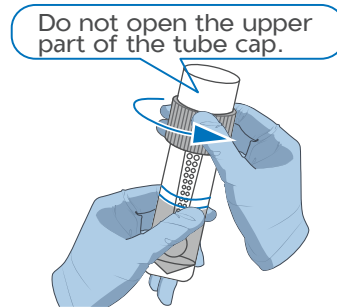
 **Tips** No sampling paper is needed in this way.

- In sitting toilet:
  - a. Lift up the toilet seat and stick the sampling paper on the two sides of the toilet. Ensure that the middle part of the paper sinks to collect the stool.
  - b. Put down the toilet seat and excrete the stool on the paper. Ensure that the sampling paper is not contaminated by the urine.



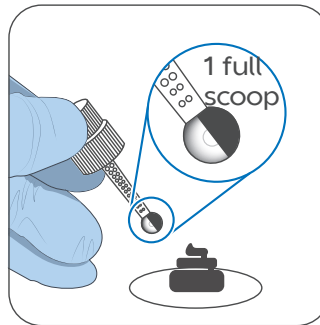


3. Wear a pair of disposable gloves and open the lower part of the cap of the stool collection tube.

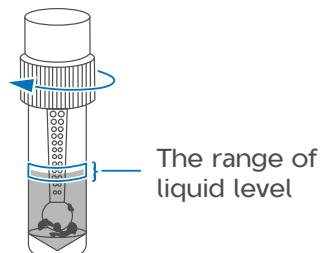


 **Tips** Do not open the upper part of the tube cap.

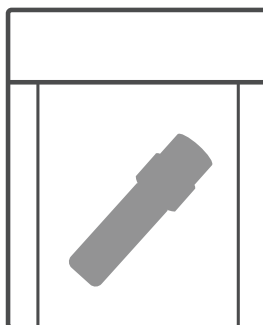
4. Pick up a full scoop of stool sample by using the sampling spoon in the tube.



5. Transfer the sample to the stool collection tube. The stool sample should be fully immersed in the preservation solution. Ensure that the liquid level falls between the two lines on the tube. Close the tube by screwing the lower part of the cap clockwise.



6. Place the stool sample into the specimen transport bag for storage or mailing.



7. Dispose of the sampling paper in the designated trash bin.

 **Tips** Dispose of the wastes according to medical waste disposal standards.

---

## Chapter 4 Warnings and precautions

- This product is for research use only and should not be used for clinical diagnosis.
- Please read the instructions for use carefully before use.
- After sampling, the liquid level should fall between the range of two lines (upper and lower limits) on the tube. Taking a small or excessive sample will affect the subsequent detection.
- Do not swallow any sample or reagent and avoid direct contact with skin and eyes. If this happens, seek medical advice immediately.
- Place the kit in a place out of reach of children.
- This product is for single use only and cannot be reused.
- Contact with the manufacturer for the safety data sheet (SDS).

---

## Appendix 1 Manufacturer information

Manufacturer	Wuhan MGI Tech Co., Ltd.
Address	Building 24, Stage 3.1, BioLake Accelerator, No.388, 2nd Gaoxin Road, East Lake High-Tech Development Zone, 430075, Wuhan, P.R. China
Technical support	Wuhan MGI Tech Co., Ltd.
E-mail	MGI-service@mgi-tech.com
Website	<a href="https://en.mgi-tech.com">https://en.mgi-tech.com</a>