

Everything | Everywhere | Every scale

# Discover with Stereo-seq OMNI

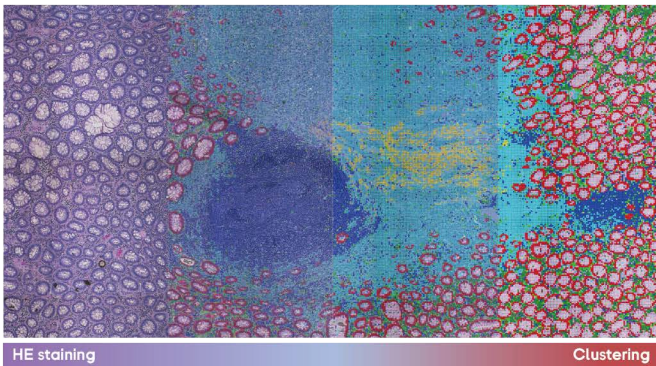
Stereo-seq OMNI -- a revolutionary sequencing-based spatial transcriptomics solution to study your FFPE samples. Stereo-seq OMNI provides true spatial single-cell total RNA information with accuracy and precision via the innovative 'Random Probe' design. Covering a continuous tissue area of 10mm by 10mm, Stereo-seq OMNI delivers best-in-class data and a bioinformatics workflow for analyzing spatial microbiome data.



## Product Features

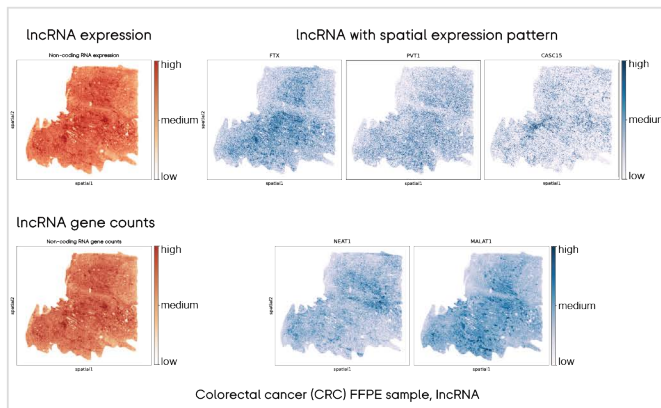
- True single-cell level gene expression profiling combined with histology study
- Species agnostic

Obtain in-depth pathological insights from H&E-stained image with ultra-high-resolution spatial transcriptomics



Colorectal cancer (CRC) FFPE sample, spatial clustering results at Bin20 (~10µm)

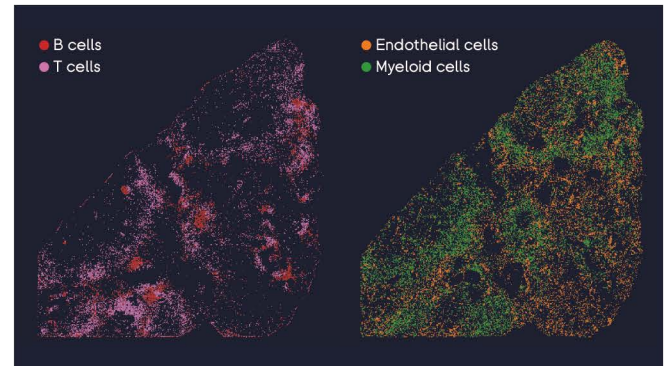
Explore how spatial subcellular localization of long non-coding RNA affects cellular function



Colorectal cancer (CRC) FFPE sample, lncRNA

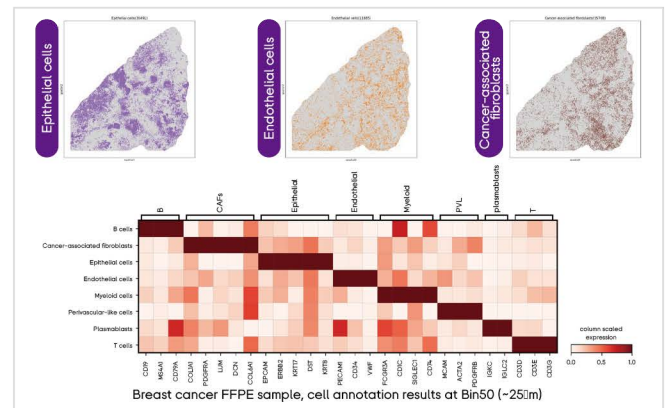
- 'Random Probe' designed for efficient capturing of total RNA and microorganisms
- Compatible with low-quality samples (DV200  $\geq$ 30%)

Provide spatial cell type annotation results in understanding biological processes at the single-cell level

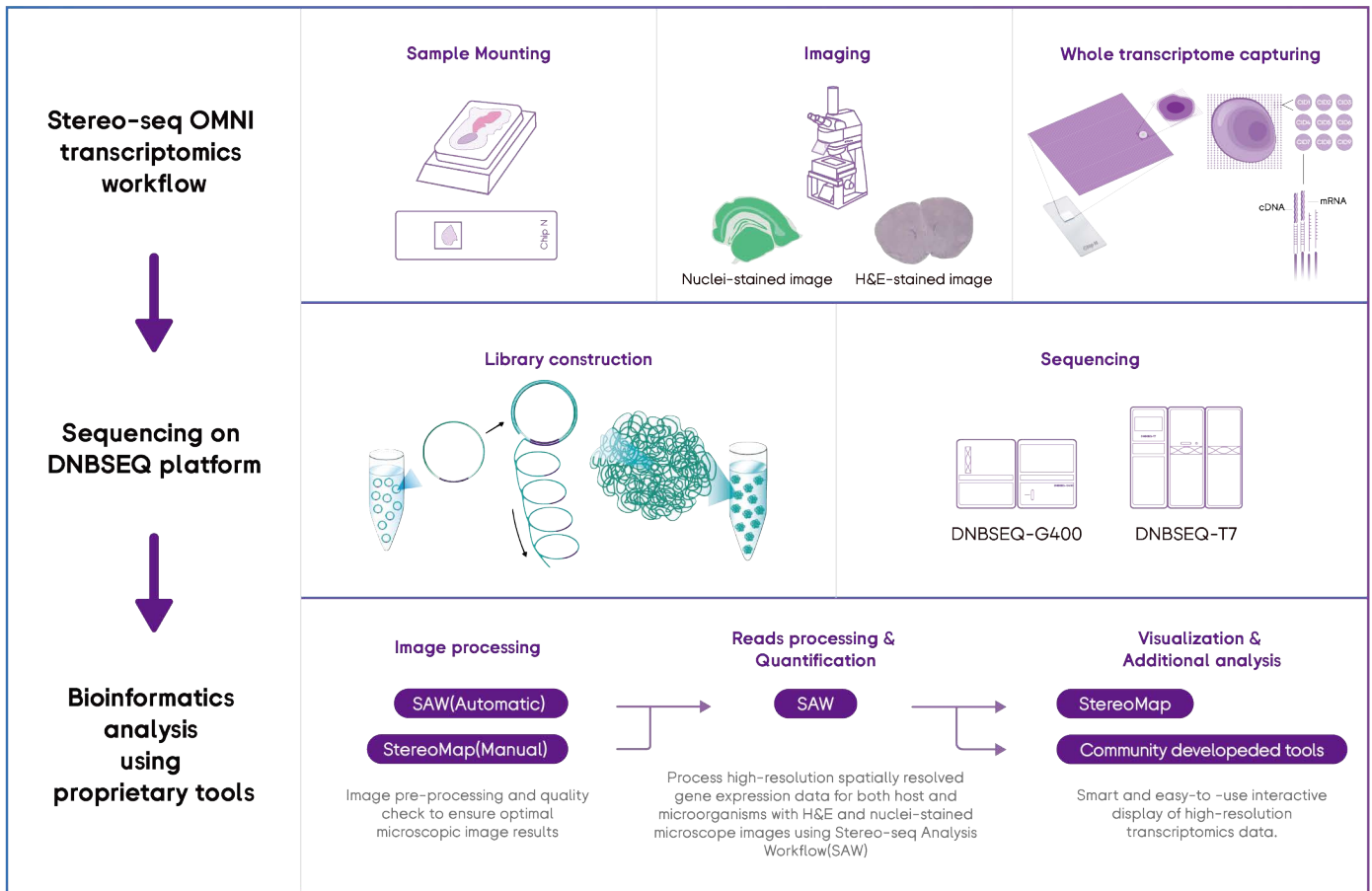


Breast cancer FFPE sample, cell annotation results at Bin50 (~25µm)

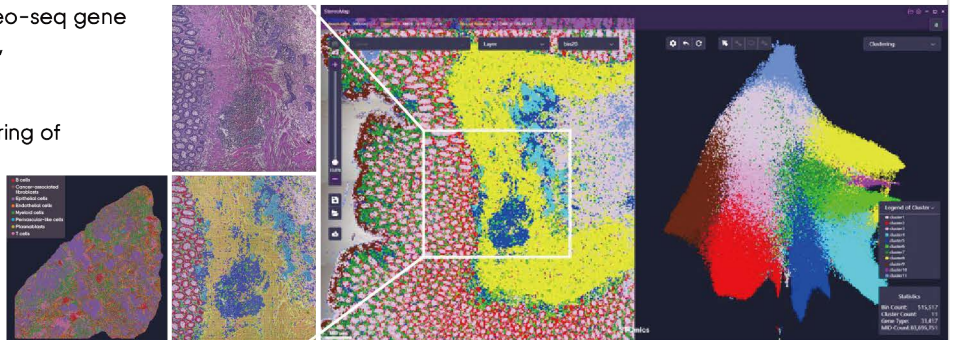
Characterize the spatial distribution of multiple types of cells with precision and robustness



Breast cancer FFPE sample, cell annotation results at Bin50 (~25µm)



- Visualization of spatially resolved Stereo-seq gene expression heatmap, spatial clustering, and cell annotation results.
- Support efficient download and rendering of publication-level HD images.
- Interactive display of high-resolution transcriptomics data and downstream analysis results from community-developed open-source tools.



## Stereo-seq OMNI Ordering Information

Stereo-seq Transcriptomics Set for FFPE				
Product Number	Kit components		Specification	Description
211SN114	Stereo-seq Transcriptomics N Kit, V1.0	211KN114	4 RXN	For generating a spatially-resolved total RNA library, available for Formalin-fixed and Paraffin-embedded (FFPE) biological tissue sections.
	Stereo-seq Chip N Slide (1cm*1cm)	210CN114	4 EA	
	STOmics FFPE Accessory Kit	310AK002	6 PCS	
111KL160	Stereo-seq 16 Barcode Library Preparation Kit		16 RXN	For constructing Stereo-seq OMNI FFPE Library

