

# Bloomics<sup>®</sup>

## Disposable Capillary Blood Collection System

Anytime, Anywhere, Virtually Painless Blood Collection



### The safe and portable blood collection system

- **Revolutionary**  
Microneedle array,  
revolutionize conventional blood collection
- **Quality**  
Classified as NMPA class II,  
ISO 13485
- **Remote**  
Blood collection anywhere, anytime
- **Painless**  
90% reported blood collection was  
painless



## MGI Bloomics® Disposable Capillary Blood Collection System

This is an innovative next-generation microneedle array system consists of a disposable capillary blood collection device and a blood collection container.

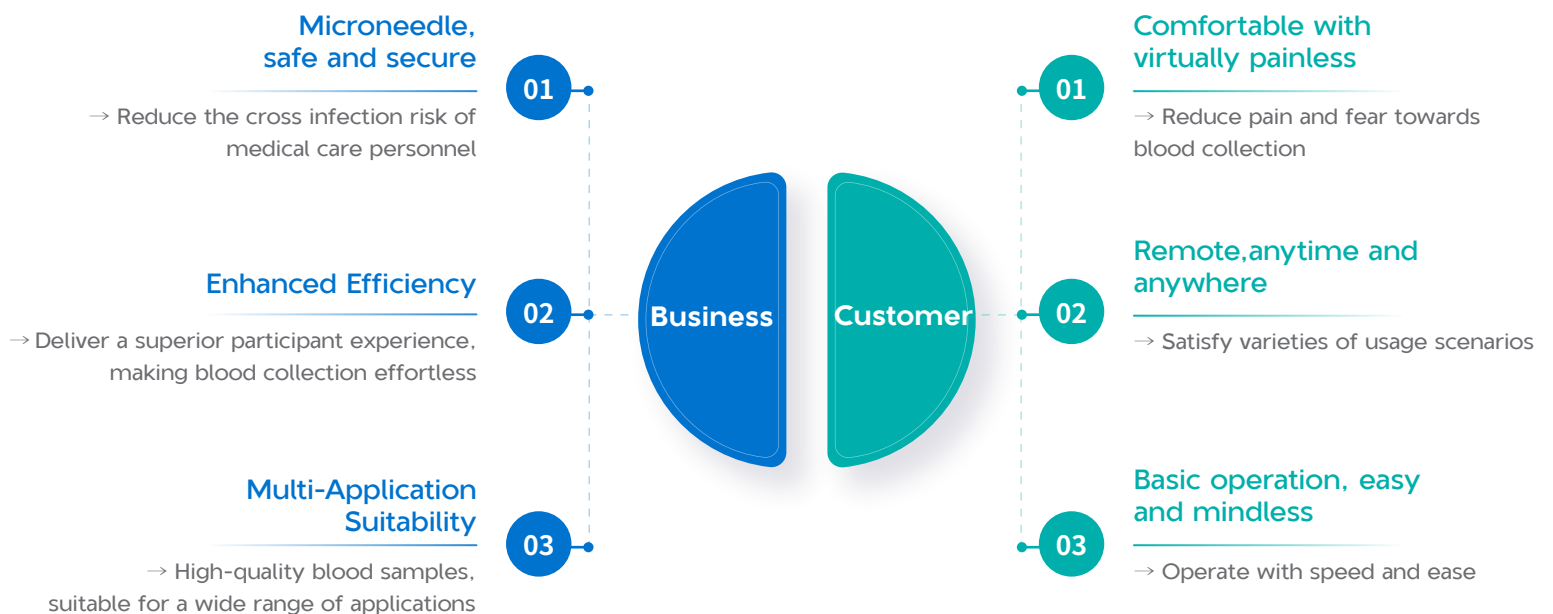
Place the blood collection device on an individual's upper arm, and blood collection begins by inserting the blood collection container into the designated slot. Bloomics® is a great way to ease fear while making blood collection convenient and enjoyable.

## Technology

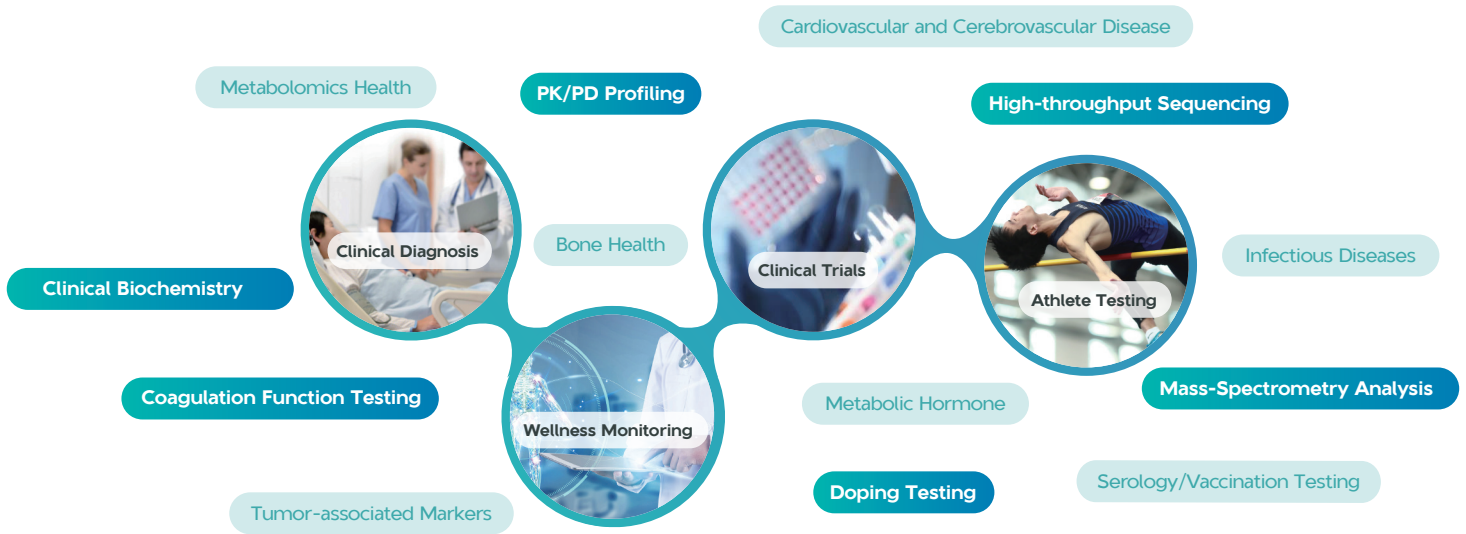
Bloomics® Disposable Capillary Blood Collection System penetrates the skin using its microneedle array, and a microfluidic channel would guide the capillary blood towards the blood collection container.

## Features

### New Era of Capillary Blood Collection



## Application\*




\*The device is designed for blood collection, and the collected blood samples can be used for medical testing and analysis, but not directly for diagnosis or testing.


## How to Use\*

- 1


Wash and clean hands




Warm your skin until it turns slightly red to increase blood flow (approximately 5 min)


- 2


Disinfect the skin with an alcohol wipe



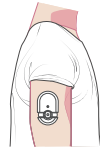
Remove the protective sticker


- 3

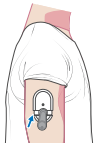
Peel off the clear paper liner to expose adhesive




Stick the device to the upper arm


- 4


Precisely insert the collection container




Remove the device (Blood collection time should not exceed 90 s)


- 5

Carefully remove the collection container, mix blood thoroughly with the additive

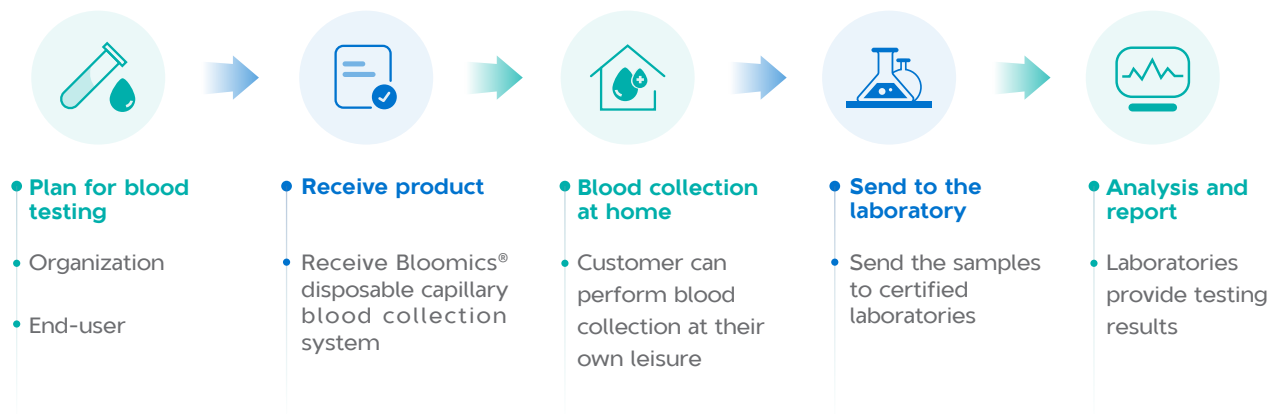


Mail sample to the lab



\*See the instructions for details

## Procedure



## Blood Collection Device Specifications



Descriptions	Specifications
Classification	NMPA Class II
Size((L x W x H)	58 mm x 38 mm x 38 mm
Weight	40 g±3 g
Collection Time	≤ 90 seconds or reached desired volume
Collection Volume	200 μL
Shelf Life	Up to 8 months

## Blood Collection Container Specifications



Descriptions	● K <sub>2</sub> EDTA	● Coagulant/Serum Gel
Sample Type	Whole Blood or Plasma	Serum
Applications	WGS	Biochemistry Test
	Blood Count	Immunoassay Test
	POCT	Trace elements & Electrolyte Test
	.....	.....

MGI Tech Co., Ltd.

📍 Building 11, Beishan Industrial Zone, Yantian District, Shenzhen, China

☎ +86-4000-688-114

🌐 en.mgi-tech.com

✉ MGI-service@mgi-tech.com

