



Portable and Easy-to-use

# DNBSEQ

Genetic Sequencer

# E25



## Easy Installation

Easy-to-use cartridge  
No environmental requirement



## Simple Sequencing

Ready-to-use in 10 minutes  
Built-in bioinformatics

# Portable and Easy-to-use Genetic Sequencer

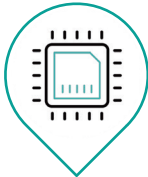
DNBSEQ-E25 is a small-sized and light-weighted genetic sequencer that can achieve high-speed and highly flexible sequencing. It also adopts microfluidics based flow cell, integrated CMOS module, and self-luminescence based chemistry, these features lower the operation threshold of a genetic sequencer.



## DNBSEQ™ Core Technology

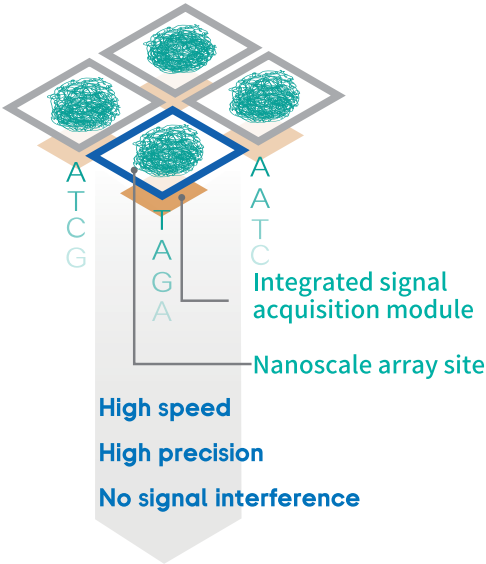
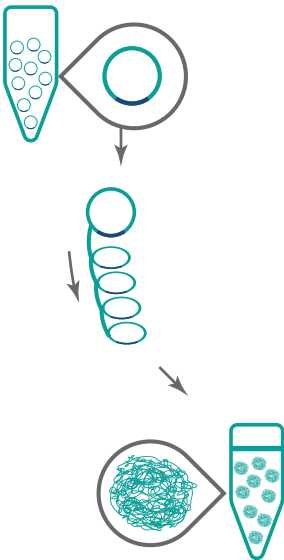
- ↑ Increased accuracy
- ↓ Decreased duplicates
- ↓ Reduced index hopping

+



## Integrated Sequencing Flow Cell

- ✓ Microfluidics based flow cell
- ✓ Integrated CMOS module
- ✓ Self-luminescence based chemistry



# Performance Parameter



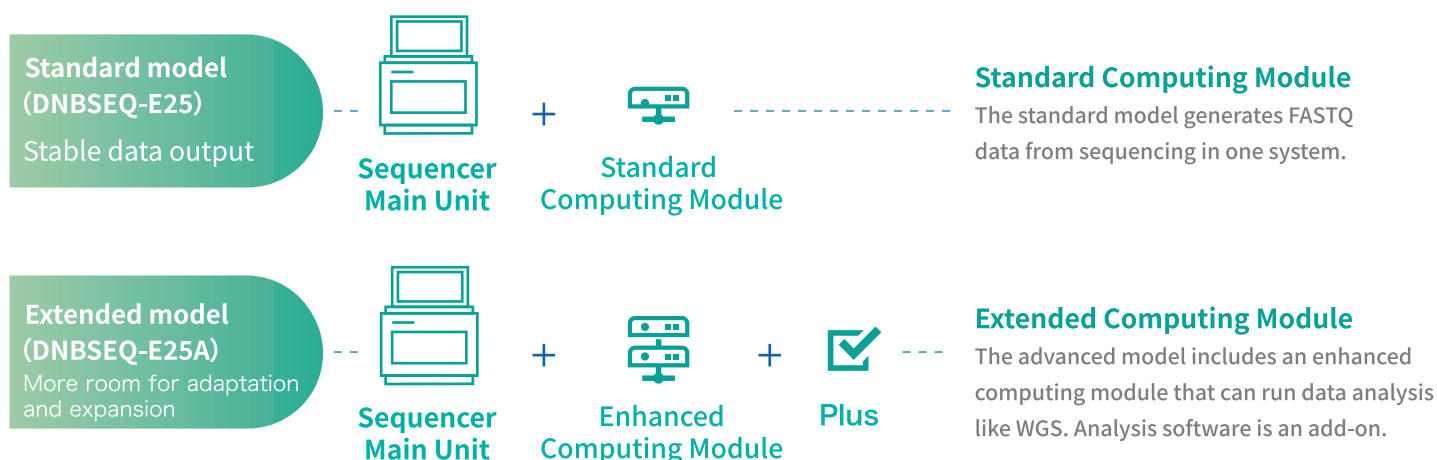
Read Lengths	Effective Reads*	Data Output	Run Time	Q30**
SE100	25M	2.5GB	~5h	>90%
PE150	25M	7.5GB	~20h	>80%
APP-C SE100***	20M	2.0 Gb	~5h	>90%
App-C PE150***	20M	6.0 Gb	~20h	>80%

\* The effective reads value is obtained according to the operation of a specific standard library, and the actual application library will fluctuate according to the sample type and library construction method

\*\* The percentage of bases above Q30 and the running time are averaged over the entire run for a particular standard library. The practical application performance is affected by sample type, library quality, insert length and other factors.

\*\*\* The App-C Sequencing Set includes the invertase module, eliminating the need to purchase additional conversion reagents.

† The existing kit supports SE50 and PE100 reads, and the instrument does not have SE50 and PE100 sequencing modes.



# Applications

## Case 1 Detection of Unknown Pathogenic Microorganisms

### Overview

Sample Types: Alveolar lavage, sputum, blood, cerebrospinal fluid, pharyngeal swabs, vaginal swabs  
 Library Prep.: TPSeq (Universal Panel and Gynecologic Panel)  
 Read Length: SE50

### Results

- Total output of 28M, Q30>97%, showing outstanding performance and excellent sequencing quality
- Obtain accurate pathogen detection results within 12h, providing a better choice for pathogenic microorganism detection applications

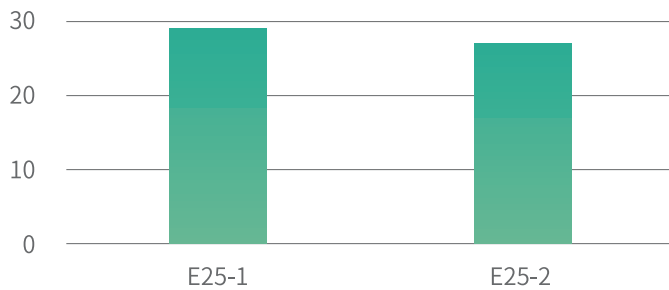


Fig. 2-1 Total reads results

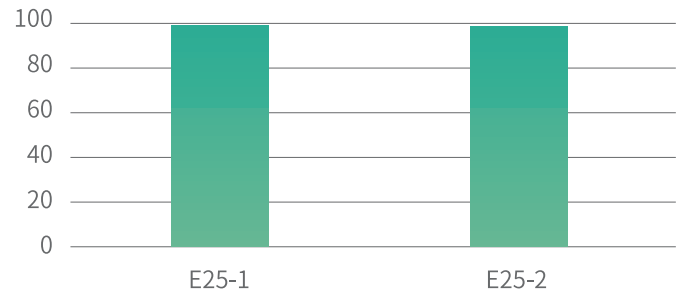


Fig. 2-2 Q30 results

Table 2-1 Analysis results

Sample: 001SY	
Pathogen	DNBSEQ-E25
Haemophilus influenzae	6208
Covid-19	1687
Prevotella intermedia	411
EB virus	260
Streptococcus anginosus	16
Pseudomonas aeruginosa	8

Sample: 002SY	
Pathogen	DNBSEQ-E25
Covid-19 OC43	10591
Streptococcus mitis	1919
HSV-1	2196
EB virus	2563
Cryptococcus neoformans	1714
C. psittaci	35
Canidia Albicans	24

## Case 2 Rapid Identification of Pathogenic Microorganisms

### Overview

Sample Types: ZymoBIOMICS™ Microbial Community DNA Standard and Bronchial-alveolar lavage fluid  
 Library Prep.: Pathogen Multiplex-PCR Library Prep Kit  
 Read Length: SE50

### Results

- Total output of 28M, Q30>97%, showing excellent sequencing quality and exceeding the amount of data required for analysis
- Complete the entire sequencing process within 3h, allowing accurate identification of pathogenic microorganisms with high repeatability and accuracy

**Table 3-1** Basic sequencing metrics generated by DNBSEQ-E25 with libraries constructed from HGT tNGS solution.

Sample	Total Reads (M)	Q30(%)	Split Rate(%)
Standard (DNA+RNA)	27.75	97.85	95.55
Bronchial-alveolar lavage fluid	24.66	93.65	95.86

**Table 3-2** Abundance of microorganisms detected in each repeated sample

Type	Name	Sample 1	Sample 2	Sample 3	Sample 4	Average	SD
G-	Escherichia coli	12.36%	13.44%	14.73%	12.89%	13.36%	1.02%
G-	Pseudomonas aeruginosa	0.45%	0.50%	0.34%	0.35%	0.41%	0.08%
G-	Salmonella enterica subsp. enterica serovar Typhi	11.22%	14.41%	12.79%	12.91%	12.83%	1.30%
G+	Enterococcus faecalis	12.50%	13.27%	10.76%	10.56%	11.77%	1.33%
G+	Staphylococcus aureus	1.43%	1.56%	0.76%	0.88%	1.16%	0.40%
G+	Listeria monocytogenes	0.94%	0.86%	0.58%	0.60%	0.75%	0.18%
F	Cryptococcus neoformans	0.90%	0.78%	0.55%	0.62%	0.71%	0.16%
F	Saccharomyces cerevisiae	0.17%	0.12%	0.10%	0.10%	0.12%	0.03%
V	Respiratory syncytial virus	58.92%	54.00%	58.66%	60.35%	57.98%	2.76%
V	Severe acute respiratory syndrome coronavirus 2	1.11%	1.05%	0.72%	0.74%	0.91%	0.20%

**Table 3-3** Relative abundance of the pathogens detected

Sample	Type	Name	Relative Abundance
tNGS-5-d	G-	Prevotella melaninogenica	71.57%
	G-	Neisseria subflava	10.40%
	G-	Veillonella parvula	0.81%
	G-	Capnocytophaga granulosa	0.39%
	G-	Veillonella dispar	10.68%
	G-	Campylobacter concisus	0.57%
	G-	Neisseria flavescens	0.47%
	G-	Capnocytophaga gingivalis	0.13%
	G+	Streptococcus sanguinis	2.34%
	G+	Cutibacterium acnes	1.40%
	G+	Schaalia odontolytica	0.21%
	G+	Streptococcus gordonii	0.21%
	G+	Staphylococcus capitis	0.18%
	MC	Chlamydia psittaci	0.65%

# Applications

## Case 3 Microbial Identification and Assembly

### Overview

Sample Types: HIV-1, MTB Standards and real samples  
 Library Prep.: ATOplex Series Library Preparation Sets  
 Read Length: PE150

### Results

- Q30>90% and excellent of the sequencing data quality
- DNBSEQ-E25 can provide support for genome assembly, typing, traceability and drug resistance analysis of HIV-1 and MTB pathogens

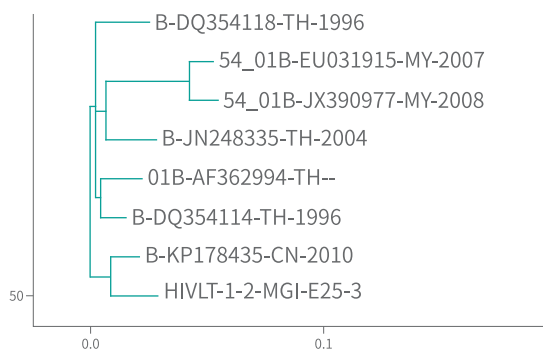


Fig. 3-1 Results of HIV-1 traceability

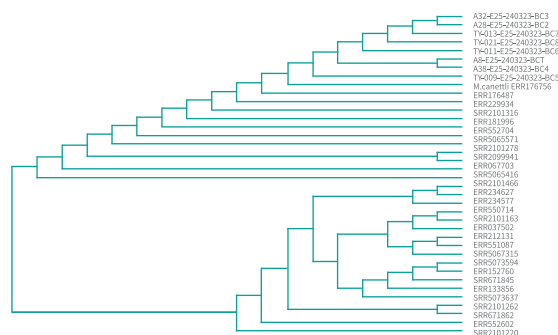


Fig. 3-2 Results of MTB traceability

Table 3-1 Analysis of HIV-1 drug-resistance

Drug Type	Drug Name	Drug Abbreviation	Gene	Mutation	Resistance Score	Resistance Degree
NRTI	Epivir	3TC	RT	M41L(10.08),K219N(96.66)	0	Susceptible
	Emtricitabine	FTC	RT	M41L(10.08),K219N(96.66)	0	Susceptible
	Abacavir	ABC	RT	M41L(10.08),K219N(96.66)	10	Potential low-level resistance
	Di-deoxyinosine	DDI	RT	M41L(10.08),K219N(96.66)	15	Low-level resistance
	Tenofovir	TDF	RT	M41L(10.08),K219N(96.66)	10	Potential low-level resistance
	Stavudine	D4T	RT	M41L(10.08),K219N(96.66)	25	Low-level resistance
	Azidothymidine	AZT	RT	M41L(10.08),K219N(96.66)	25	Low-level resistance
NNRTI	Doravirine	DOR	RT	K103N(27.14),Y181C(99.56),H221Y(3.16)	25	Low-level resistance
	Efavirenz	EFV	RT	K103N(27.14),Y181C(99.56),H221Y(3.16)	100	High-level resistance
	Etravirine	ETR	RT	K103N(27.14),Y181C(99.56),H221Y(3.16)	40	Intermediate resistance
	Nevirapine	NVP	RT	K103N(27.14),Y181C(99.56),H221Y(3.16)	135	High-level resistance
	Rilpivirine	RPV	RT	K103N(27.14),Y181C(99.56),H221Y(3.16)	60	High-level resistance

Table 3-2 Results of MTB abundance, typing, and mutation detection

Sample ID	Types of TB Infection	TB Abundance	Drug-resistance Associated Mutation	Clade	SIT
A28	MTB	MTB(97.11)	0	Beijing	8.1%±0.1%
A32	MTB	MTB(96.40)	1	Beijing	14.7%±0.2%
A38	MTB	MTB(96.32)	0	Beijing	9.3%±0.4%
A8	MTB	MTB(96.32)	1	Beijing	16.5%±0.2%
TY-009	MTB	MTB(95.86)	2	Beijing	16.0%±0.6%
TY-011	Mixed	MTB(91.86); NTM(1.68)	0	Beijing	10.5%±0.2%
TY-013	MTB	MTB(96.58)	0	Beijing	8.4%±0.3%
TY-021	MTB	MTB(96.49)	0	Beijing	16.4%±0.1%

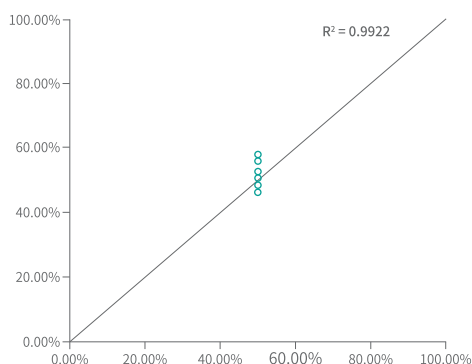
## Case 4 Breast/Ovarian Cancer Genetic Testing (BRCA1/2 detection)

### Overview

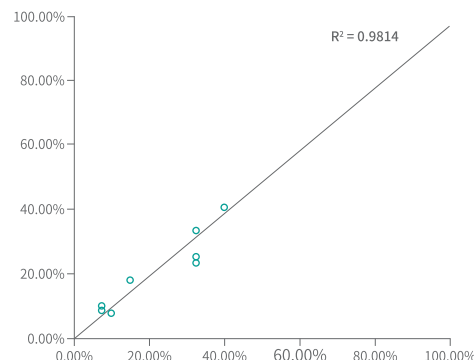
Sample Types: HD793 and HD795 DNA Standards  
 Library Prep.: BRCA1/2 Library Preparation Kit  
 Read Length: PE150

### Results

- Total output of 25M, Q30>96%, the bases can be accurately identified and the sample data volume meets the requirements for analysis
- Both germline and somatic mutations can be accurately detected, and the detection frequency is close to the theoretical frequency



**Fig. 4-1** Correlation analysis of variation detection in HD793



**Fig. 4-2** Correlation analysis of variation detection in HD795

**Table 4-1** Sequencing results

Sequencer	Sample	Q30 (%)	Mapping Rate (%)	Target Rate (%)
DNBSEQ-E25	HD793	96.73%	99.70%	96.10%
	HD795	96.69%	99.63%	96.10%

**Table 4-2** HGT Horizon BRCA germline I DNA reference standard (HD793 – Sample 96)

Gene	GRCh37 coordinates	Coding	Protein	Expected VAF	DNBSEQ-E25 VAF
BRCA1	17:41246245	c.1303G>T	p.Asp435Tyr	50.00%	50.57%
BRCA1	17:41244000	c.3548A>G	p.Lys1183Arg	50.00%	46.35%
BRCA1	17:41245090	c.2458A>G	p.Lys820Glu	50.00%	48.49%
BRCA1	17:41244936	c.2612C>T	p.Pro871Leu	100.00%	99.84%
BRCA1	17:41234451	c.4327C>T	p.Arg1443Ter	0.00%	0.00%
BRCA1	17:41223094	c.4837A>G	p.Ser1613Gly	50.00%	58.05%
BRCA2	13:32912750	c.4258G>T	p.Asp1420Tyr	0.00%	0.00%
BRCA2	13:32937355	c.8021dup	p.Ile2675AspfsTer6	0.00%	0.00%
BRCA2	13:32913559	c.5073del	p.Lys1691AsnfsTer15	0.00%	0.00%
BRCA2	13:32913837	c.5351del	p.Asn1784ThrfsTer7	50.00%	52.78%
BRCA2	13:32906480	c.865A>C	p.Asn289His	50.00%	56.04%
BRCA2	13:32911463	c.2971A>G	p.Asn991Asp	50.00%	50.93%
BRCA2	13:32929387	c.7397T>C	p.Val2466Ala	100.00%	99.80%

**Table 4-3** HGT Horizon BRCA somatic multiplex I DNA reference standard (HD795 – Sample81)

Gene	GRCh37 coordinates	Coding	Protein	Expected VAF	DNBSEQ-E25 VAF
BRCA1	17:41246245	c.1303G>T	p.Asp435Tyr	7.50%	8.95%
BRCA1	17:41244000	c.3548A>G	p.Lys1183Arg	7.50%	7.70%
BRCA1	17:41245090	c.2458A>G	p.Lys820Glu	7.50%	7.96%
BRCA1	17:41244936	c.2612C>T	p.Pro871Leu	15.00%	18.03%
BRCA1	17:41234451	c.4327C>T	p.Arg1443Ter	32.50%	25.28%
BRCA1	17:41223094	c.4837A>G	p.Ser1613Gly	7.50%	10.02%
BRCA2	13:32912750	c.4258G>T	p.Asp1420Tyr	32.50%	23.58%
BRCA2	13:32937355	c.8021dup	p.Ile2675AspfsTer6	10.00%	7.93%
BRCA2	13:32913559	c.5073del	p.Lys1691AsnfsTer15	32.50%	33.54%
BRCA2	13:32913837	c.5351del	p.Asn1784ThrfsTer7	40.00%	40.75%
BRCA2	13:32906480	c.865A>C	p.Asn289His	7.50%	8.43%
BRCA2	13:32911463	c.2971A>G	p.Asn991Asp	7.50%	8.21%
BRCA2	13:32929387	c.7397T>C	p.Val2466Ala	100.00%	99.80%

# Applications

## Case 5 16s rRNA Sequencing

### Overview

Sample Types: ZymoBIOMICS™ Microbial Community DNA Standard  
 Library Prep.: 16S Amplicon Panel, MGIEasy Universal Library Preparation Kit (App-A)  
 Read Length: PE150

### Results

- Total output of 27M, Q30>85%, the bases can be accurately identified and the sample data volume meets the requirements for analysis
- The 16S Amplicon Panel is compatible with the DNBSEQ-E25 platform, providing stable bacterial detection results regardless of different starting amounts and data volumes

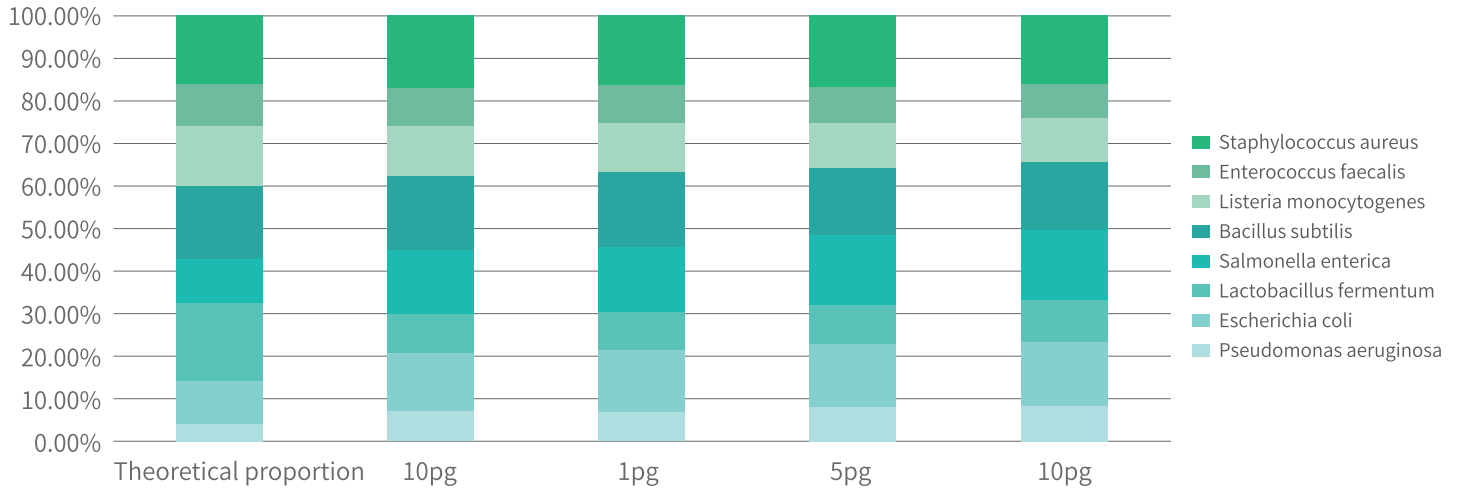


Fig. 5-1 Analysis results

Table 5-1 Sequencing results

Sequencer	Total Reads (M)	Q30 (%)	SplitRate (%)	Time (h)
DNBSEQ-E25	27.88	87.5	92.13	21

Table 5-2 Analysis results

Species Composition	Avg. GC (%)	Theoretical Proportion	10 pg Input (3 repeats)	1 pg Input (3 repeats)	5 pg Input (3 repeats)	2 pg Input (3 repeats)
<i>Pseudomonas aeruginosa</i>	66.2	4.2%	6.9%±0.2%	7.1%±0.2%	8.1%±0.1%	8.4%±0.1%
<i>Escherichia coli</i>	56.8	10.1%	13.9%±0.4%	14.4%±0.1%	14.7%±0.2%	14.9%±0.3%
<i>Lactobacillus fermentum</i>	52.8	18.4%	9.3%±0.2%	9.2%±0.2%	9.3%±0.4%	10.1%±0.1%
<i>Salmonella enterica</i>	52.2	10.4%	15.0%±0.3%	15.3%±0.5%	16.5%±0.2%	16.5%±0.3%
<i>Bacillus subtilis</i>	43.8	17.4%	17.7%±0.3%	17.5%±0.6%	16.0%±0.6%	16.1%±0.4%
<i>Listeria monocytogenes</i>	38	14.1%	11.6%±0.1%	11.5%±0.1%	10.5%±0.2%	10.4%±0.1%
<i>Enterococcus faecalis</i>	37.5	9.9%	9.3%±0.3%	9.3%±0.2%	8.4%±0.3%	8.3%±0.4%
<i>Staphylococcus aureus</i>	32.7	15.5%	16.3%±0.3%	15.7%±0.4%	16.4%±0.1%	15.3%±0.5%



## Case 6 HLA Sequencing

### Overview

Sample Types: gDNA Standards  
 Library Prep.: HLATyping Panel  
 Read Length: PE150

### Results

- Q30 >85%, the bases can be accurately identified and the sample data volume meets the requirements for analysis
- DNBSEQ-E25 can get accurate and reliable HLA typing results, with the first two positions of typing being completely consistent

**Table 6-1** HLA Typing Results

Class I UCLA DNA Reference (standard)		HLA-A		HLA-B		HLA-C	
C1-202	Expected	01:03	69:01	51:01	73:01	15:05	16:02
	Reported	A*01:03:01:02	A*69:01:01:01	B*51:01:01:10	B*73:01:01:01	C*15:05:01:01	C*16:02:01:01
C1-214	Expected	02:06	11:01	15:12	35:03	03:04	04:01
	Reported	A*02:06:01:01	A*11:01:01:01	B*15:12:01	B*35:03:01:03	C*03:04:01:22	C*04:01:01:14
C1-114	Expected	03:02	68:02	15:17	49:01	05:01	05:01
	Reported	A*03:02:01:01	A*68:02:01:01	B*15:17:01:01	B*49:01:01:01	C*05:01:01:02	C*05:01:01:02

**Table 6-2** HLA Typing Results

Class II UCLA DNA Reference (standard)		DRB1		DRB3/4/5		DQA1	
C2-211	Expected	07:01:01	16:02:01	4*01:03:01:02N	5*01:01:01	01:02:02	02:01:01
	Reported	DRB1*07:01:01:02	DRB1*16:02:01:03	DRB4*01:03:01:02N	DRB5*01:01:01:01	DQA1*01:02:02:05	DQA1*02:01:01:01
C2-218	Expected	03:01:01	04:02:01	3*02:02:01	4*01:03:01	03:01:01	05:01:01
	Reported	DRB1*03:01:01:02	DRB1*04:02:01	DRB3*02:02:01:02	DRB4*01:03:01:03	DQA1*03:01:01:01	DQA1*05:01:01:02
C2-115	Expected	01:03	13:01:01	3*02:02:01	/	01:01:01	01:03:01
	Reported	DRB1*01:03:01:01	DRB1*13:01:01:01	DRB3*02:02:01:02	/	DQA1*01:01:01:01	DQA1*01:03:01:02

**Table 6-3** HLA Typing Results

Class II UCLA DNA Reference (standard)		DQB1		DPA1		DPB1	
C2-211	Expected	03:03:02	05:02:01	01:03:01	02:01:01	04:01:01	10:01:01
	Reported	DQB1*03:03:02:01	DQB1*05:02:01:01	DPA1*01:03:01:04	DPA1*02:01:01:01	DPB1*04:01:01:06	DPB1*10:01:01:01
C2-218	Expected	02:01:01	03:02:01	01:03:01	03:01	02:01:02	18:01
	Reported	DQB1*02:01:01:01	DQB1*03:02:01:01	DPA1*01:03:01:71	DPA1*03:01:02:02	DPB1*02:01:02:10	DPB1*18:01:01:01
C2-115	Expected	05:01:01	06:03:01	01:03:01	/	02:01:02	04:01:01
	Reported	DQB1*05:01:01:03	DQB1*06:03:01:01	DPA1*01:03:01:01	DPA1*01:03:01:02	DPB1*02:01:02:78	DPB1*04:01:01:04

# Applications

## Case 7 Small Whole Genome Sequencing

### Overview

Sample Types: gDNA of *Saccharomyces cerevisiae* strain  
Library Prep.: MGIEasy Universal DNA Library Preparation Set  
Read Length: SE100

### Results

- Even coverage of sequencing data for accurate identification of tandem repeats, mutations, heterozygosity, and other conditions
- Allow samples to be sequenced immediately without the need to batch and send them out, reducing the sequencing validation time

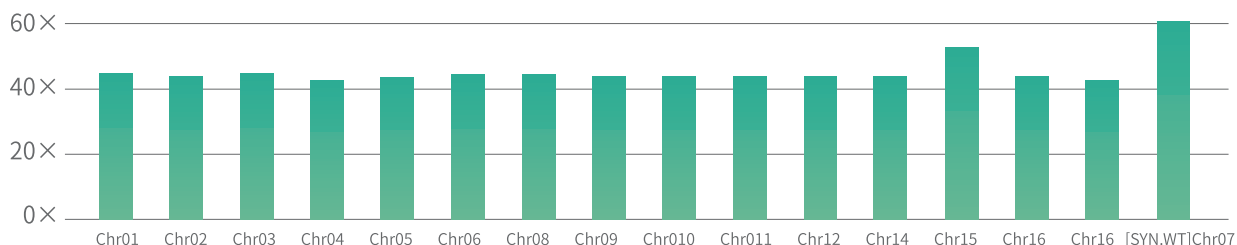


Fig. 7-1 Analysis results

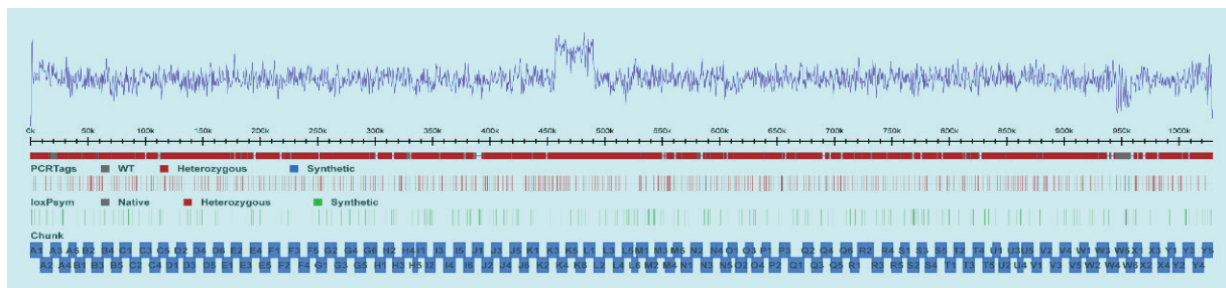


Fig. 7-2 Tandem repeats on chromosome at (456311-489810) target location

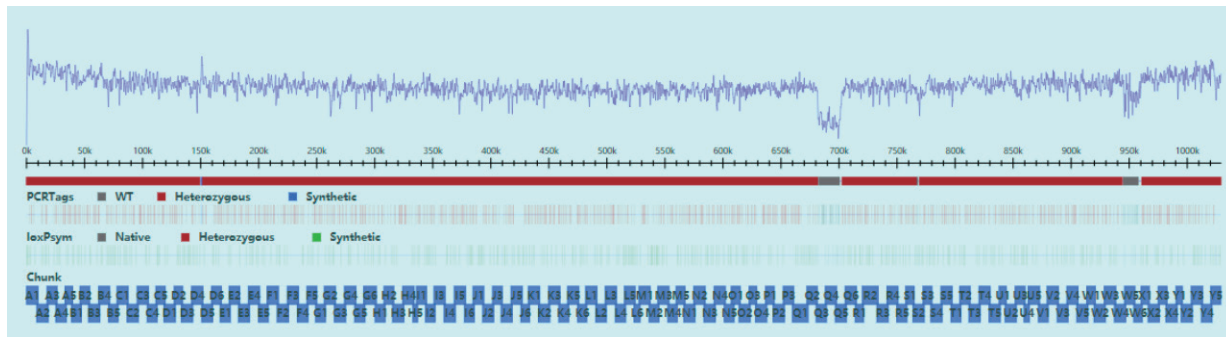


Fig. 7-3 Normal deletion on chromosome at (681673-701557) target deletion location

## Sequencer Main Unit

<b>Models</b>	<b>DNBSEQ-E25, DNBSEQ-E25A*</b>	
<b>Dimensions</b>	348 mm (L) × 312 mm (W) × 257 mm (H)	
<b>Net Weight</b>	~15kg	
<b>Power</b>	Rated Voltage and Power	24V DC, 5A
<b>Touch Screen</b>	LCD Touch Screen	
	Touch Screen Size	12.1 inch
	Touch Screen Resolution	1280 × 800
<b>Maximum Sound Pressure</b>	65 dBA	
<b>Shell Protection Grade</b>	IPX0	
<b>Operating Environment Requirements</b>	Temperature	15 ° C ~ 30 ° C
	Relative Humidity	20% RH ~ 80% RH
	Atmospheric Pressure	70 kPa~106 kPa
<b>Shipping/Storage Environment</b>	Temperature	-20 ° C ~ 50 ° C
	Relative Humidity	15% RH ~85% RH

\*Both models have the same host configuration

## Computing Module

<b>Models</b>	<b>Standard (DNBSEQ-E25)</b>	<b>Enhanced (DNBSEQ-E25A)</b>
<b>CPU</b>	i7-10700(8 Core)	D-2183IT(16 Core)
<b>Internal Storage</b>	64G	128G
<b>SSD</b>	256GB SSD + 2T HDD	256GB SSD + 8T HDD
<b>Power</b>	20V DC, 11.5A	100-240V~50-60 Hz, 300VA
<b>Net Weight</b>	3.4kg	5.5kg
<b>Dimensions</b>	348 mm (L) × 312 mm (W) × 40 mm (H)	



## Ordering Information

Cat. No	Product Name	Intended Market
900-000537-00	DNBSEQ-E25RS(CE-RUO)	RUO
900-000538-00	DNBSEQ-E25ARS(CE-RUO)	RUO
900-000715-00	DNBSEQ-E25RS(EAC)	RUO
900-000716-00	DNBSEQ-E25ARS(EAC)	RUO
940-000573-00	DNBSEQ-E25RS High-throughput Sequencing Set (FCL SE100)	RUO
940-000567-00	DNBSEQ-E25RS High-throughput Sequencing Set (FCL PE150)	RUO
940-000569-00	DNBSEQ-E25RS High-throughput Sequencing Set (App-C FCL SE100)	RUO
940-000574-00	DNBSEQ-E25RS High-throughput Sequencing Set (App-C FCL PE150)	RUO
900-000850-00	DNBSEQ-E25	IVD
900-000566-00	DNBSEQ-E25A	IVD
940-000601-00	Universal Sequencing Reaction Kit (E25 SM FCL SE100)	IVD
940-000604-00	Universal Sequencing Reaction Kit (E25 SM FCL PE150)	IVD

MGI Tech Co., Ltd.

Building 11, Beishan Industrial Zone,  
Yantian District, Shenzhen.CHINA  
518083



Version: July 2024 | MGPA0522202-01

Information in this brochure is updated to [07/03/2024] and only for your reference. In no event shall the brochure be regarded as warranty or commitment made by MGI Tech Co., Ltd. All rights and obligations shall be subject to the final executed agreement.

 [en.mgi-tech.com](https://en.mgi-tech.com)

 [MGI-service@mgi-tech.com](mailto:MGI-service@mgi-tech.com)

\*StandardMPS sequencing reagents are available in modified form in Germany, UK, Sweden, and Switzerland.